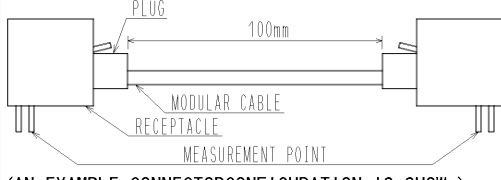
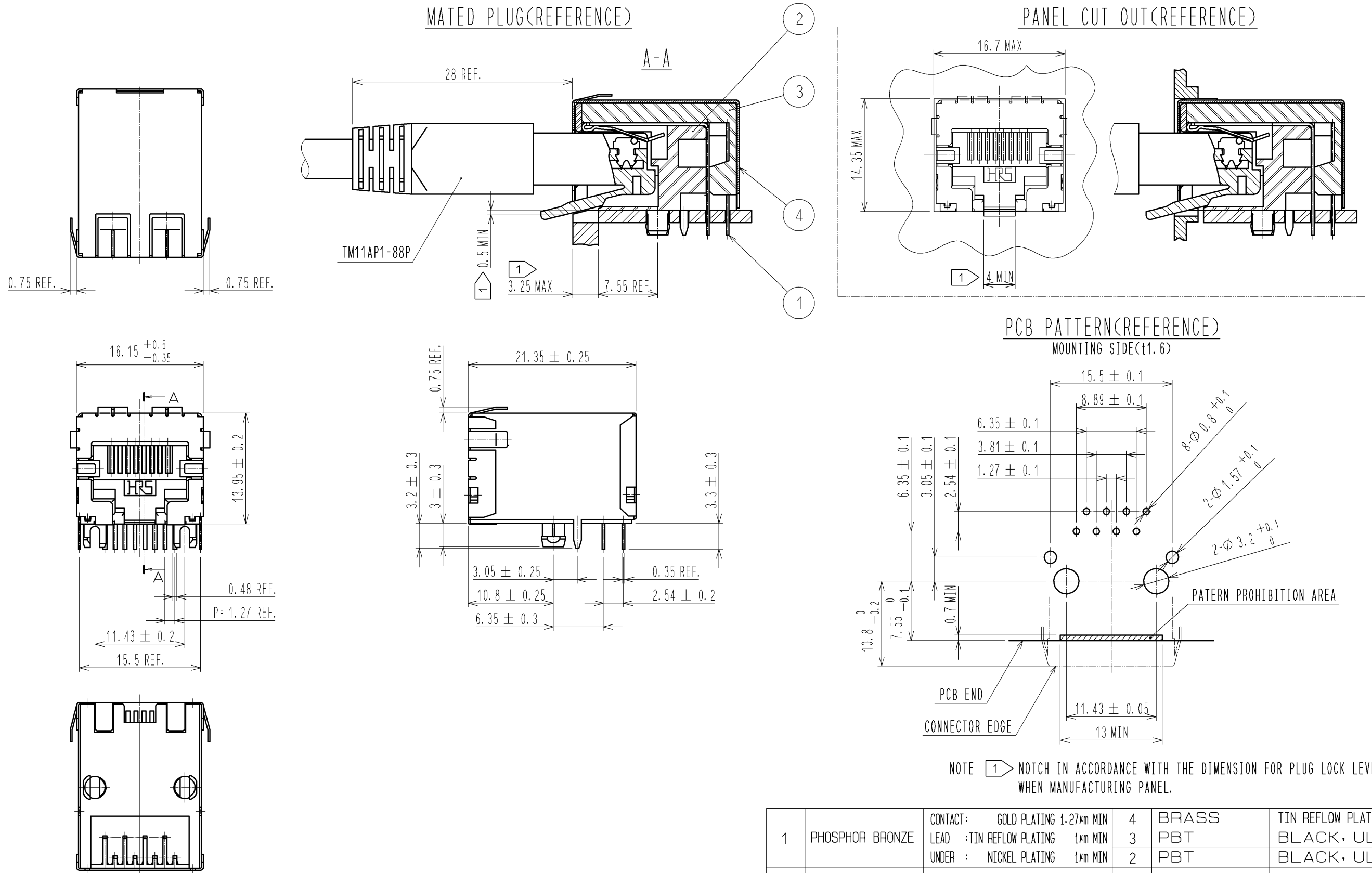


APPLICABLE STANDARD		EIA / TIA TSB 40 CAT5			
RATING	OPERATING TEMPERATURE RANGE	① -25 °C TO +80 °C	STORAGE TEMPERATURE RANGE	② -25 °C TO +60 °C	
	VOLTAGE	125 V AC	OPERATING HUMIDITY RANGE	95 % MAX	
	CURRENT	0.5 A	APPLICABLE CABLE	-	
<b>SPECIFICATIONS</b>					
ITEM	TEST METHOD		REQUIREMENTS	QT	AT
<b>CONSTRUCTION</b>					
GENERAL EXAMINATION	VISUALLY AND BY MEASURING INSTRUMENT.		ACCORDING TO DRAWING.	X	X
MARKING	CONFIRMED VISUALLY.			X	X
<b>ELECTRIC CHARACTERISTICS</b>					
CONTACT RESISTANCE	100 mA MAX (DC OR 1000 Hz AC).  (AN EXAMPLE CONNECTOR CONFIGURATION IS SHOW.)		230 mΩ MAX.	X	X
INSULATION RESISTANCE	100 V DC.		100 MΩ MIN.	X	X
VOLTAGE PROOF (CONTACT TO CONTACT)	500 V AC FOR 1 min.		NO FLASHOVER OR BREAKDOWN.	X	X
NEAR END CROSSTALK (NEXT) LOSS	MEASURED MINIMUM NEXT LOSS FOR EACH PAIR COMBINATION AT 100 MHz.		40 dB MIN.	X	-
<b>MECHANICAL CHARACTERISTICS</b>					
MECHANICAL OPERATION	200 TIMES INSERTIONS AND EXTRACTIONS.		1) CONTACT RESISTANCE: 250 mΩ MAX. 2) NO DAMAGE, CRACK AND LOOSENESS OF PARTS.	X	-
VIBRATION	FREQUENCY 10 TO 55 Hz SINGLE AMPLITUDE 0.75 mm, 5 min/SYCLE AT 10 CYCLES.		1) NO ELECTRICAL DISCONTINUITY OF 5 μs. 2) CONTACT RESISTANCE: 250 mΩ MAX.	X	-
SHOCK	490 m/s <sup>2</sup> DIRECTIONS OF PULSE 11 ms AT 3 TIMES FOR 6 DIRECTIONS.		3) NO DAMAGE, CRACK AND LOOSENESS OF PARTS.	X	-
<b>ENVIRONMENTAL CHARACTERISTICS</b>					
DAMP HEAT, CYCLIC	EXPOSED AT +40 °C, 90 TO 95 °C , 500 h		1) CONTACT RESISTANCE: 250 mΩ MAX. 2) INSULATION RESISTANCE: 1 MΩ MIN. (AT HIGH HUMIDITY) 10 MΩ MIN. (AT DRY) 3) NO DAMAGE, CRACK AND LOOSENESS OF PARTS.	X	-
RAPID CHANGE OF TEMPERATURE	TEMPERATURE -55 ± 3 → 5 TO 35 → 85 ± 2 → 5 TO 35 °C TIME 30 TO 35 → 5 MAX → 30 TO 35 → 5 MAX min UNDER 5 CYCLES.		1) CONTACT RESISTANCE: 250 mΩ MAX. 2) INSULATION RESISTANCE: 100 MΩ MIN. 3) NO DAMAGE, CRACK AND LOOSENESS OF PARTS.	X	-
CORROSION SALT MIST	EXPOSED IN 5 % SALT WATER SPRAY FOR 48 h.		1) CONTACT RESISTANCE: 250 mΩ MAX. 2) NO HEAVY CORROSION.	X	-
RESISTANCE TO SOLDERING HEAT	SOLDER TEMPERATURE, 260 ± 5 °C FOR IMMERSION, DURATION 5 ± 1 S.		NO DEFORMATION OF CASE AND EXCESSIVE LOOSENESS OF THE TERMINALS.	X	-
SOLDERABILITY	SOLDERED AT SOLDER TEMPERATURE, 245 ± 5 °C FOR IMMERSION, DURATION 3 S MAX.		MIN. 95 % OF SOLDER IMMersed AREA SHALL BE COVERED NEW SOLDER COATING.	X	-
	COUNT	DESCRIPTION OF REVISIONS	DESIGNED	CHECKED	DATE
REMARK	①	THE OPERATION TEMPERATURE INCLUDES THE RYSE BY CURRENT CARRYING.	APPROVED	RI. TAKAYASU	11.05.31
	②	STORAGE TEMPERATURE RANGE SHOWS STORAGE CONDITION FOR UNUSED PRODUCTS INCLUDING PACKING MATERIALS. FOLLOW THE OPERATING TEMPERATURE RANGE FOR STORAGE CONDITION AFTER MOUNTING.	CHECKED	YH. ENAMI	11.05.31
			DESIGNED	MT. ITANO	11.05.31
			DRAWN	MT. ITANO	11.05.31
Note	QT:Qualification Test AT:Assurance Test X:Applicable Test		DRAWING NO.	ELC4-121543-01	
<b>HRS</b>	SPECIFICATION SHEET		PART NO.	TM11R-5N2-88 (50)	
	HIROSE ELECTRIC CO., LTD.		CODE NO.	CL222-3952-5-50	① 1/1



NOTE 1 NOTCH IN ACCORDANCE WITH THE DIMENSION FOR PLUG LOCK LEVER SPACE WHEN MANUFACTURING PANEL.

1	PHOSPHOR BRONZE	CONTACT: GOLD PLATING 1.27 $\mu$ m MIN LEAD : TIN REFLOW PLATING 1 $\mu$ m MIN UNDER : NICKEL PLATING 1 $\mu$ m MIN	4	BRASS	TIN REFLOW PLATING 1 $\mu$ m MIN		
			3	PBT	BLACK, UL94V-0		
			2	PBT	BLACK, UL94V-0		
NO.	MATERIAL	FINISH, REMARKS	NO.	MATERIAL	FINISH, REMARKS		
UNITS		SCALE	COUNT	DESCRIPTION OF REVISIONS	DESIGNED	CHECKED	DATE
mm		2:1					
		HIROSE ELECTRIC CO., LTD.	APPROVED : RI. TAKAYASU	11.05.31	DRAWING NO. EDC3-121543-01		
			CHECKED : YH. ENAMI	11.05.31	PART NO. TM11R-5N2-88(50)		
			DESIGNED : MT. ITANO	11.05.31	CODE NO. CL222-3952-5-50		
			DRAWN : MT. ITANO	11.05.31	1/1		